

DENTAL EQUIPMENT PLAN
FOR
Winding Waters Community Health
Joseph, OR
OVERALL PLAN VIEW

Sheet 1 of 8

Drafted By:
MA #1 1-9-2019
MA #2 1-21-2019
MA #3 2-5-2019

Equipment Specialist: DAN STUCKI Architect/Designer/Contractor: REEDY BERG
Plan # 3

Scale:
3/16"=1'-0"

BURKHART
Integrity. Knowledge. Client Success.

ADA MEMBER
American Dental Trade Association
© COPYRIGHTED 1992 BURKHART DENTAL SUPPLY COMPANY REVISION #0.1-2004

Your Local **BURKHART** Branch . .

YAKIMA BRANCH
1705 CREEKSIDE LOOP
YAKIMA, WA 98902
LOCAL: 509-248-5441 ■ FAX: 866-401-6649
www.burkhartdental.com

NOTICE: This proposed plan is offered to assist our customer's architect or designer, AND IT IS NOT TO BE USED AS A WORKING DRAWING. Burkhardt Dental Supply Co. does NOT authorize use of this plan for any other purposes, and we disclaim all liability if used for any other purposes.

1

2

3

4

STAFF BREAK
028

NEW LOCKERS

(E)01

(E)02

REUSED (E) DOORS

HALL
013

PATIENT TOILET
031

DENTAL
025

DENTAL
024

EXAM ROOM
023

BEHAVIORAL HEALTH
022

BEHAVIORAL HEALTH
021

VITALS

CLINIC HALL
012

OFFICE
029

TEAM WORK
101

GAS STORAGE
102

DENTAL EQUIP
027

PANOREX
026

DENTAL
032

DENTAL
033

EXAM ROOM
034

EXAM ROOM
035

BEHAVIORAL HEALTH
036

CLINIC ENTRY
010

W2

W1

W2

W2

9'-10"

9'-10"

10'-3"

5'-4"

5'-3"

4'-9"

9'-7"

9'-7"

10'-4"

022

021

034

035

036

A.1

A

B

C

D

E

FLOOR AND BRACING PLAN FOR DENTAL EQUIPMENT
APPROX. 1000 USABLE SQ. FT. (LEASEHOLD AREA MAY VARY)

BRACING / BACKING LEGEND

(A) All wood backing and bracing to be of fire resistant or substitute for other material if required by local code. Verify structural application with Burkhardt and architect / designer.
(B) Notify Burkhardt if ceiling height in the operatories is less than 7'-8" (92"). Ceiling height may effect equipment installation.

- ☐ Miscellaneous wood backing, see notes for details. Verify size and location with Burkhardt Dental. All dental x-rays require backing.
☑ See manufacturer's templates provided by Burkhardt.

DO NOT SCALE FROM THESE DRAWINGS.
USE CALLED-OUT DIMENSIONS ONLY.

NOTE:
All framing, bracing, door sizes, floor levels, cabinet heights, rest room and lunch room facilities (if any) and other design details should be modified to comply with latest Americans With Disabilities Act (A.D.A.) guidelines and similar State requirements. Architect or Contractor must submit plans to building and other local officials as necessary for compliance with all Federal, State and Local building codes, including A.D.A. guidelines, before commencing work. Notify Burkhardt of any changes that would modify any dental treatment rooms and/or any dental cabinet layout.

These plans are not meant to be a design for building-out an operatory but, instead, represent only a sample layout; a similar layout of the equipment in a dentist's facilities will not necessarily be compatible with the A.D.A. or other applicable law or code. The manufacturers and Burkhardt are not Architects or Engineers; the manufacturers and Burkhardt do not warrant or represent that the plans are in compliance with the A.D.A. or other applicable law or code. The dentist should consult their Architects prior to installing the equipment to ensure compliance with the A.D.A. or other applicable law or code.

The Contractor should furnish all electrical, plumbing, and structural requirements listed, as this is necessary before the dental equipment can be installed. The tenant, or Burkhardt, will furnish the dental equipment. Check all measurements with the actual building dimensions, or Architect's plans. The specifications shown on this plan have not been checked for compliance with Federal, State or Local building codes and regulations.

Listed requirements show only the services, connections and fixtures required for the dental office equipment shown; and these drawings do not provide for the electrical, mechanical and structural requirements for the building or office as a whole.

See Mechanical Specification and Detail Sheets for further information.

THIS IS A SUGGESTED PLAN WITH
SPECIFICATIONS FOR THE DENTAL EQUIPMENT ONLY.

DENTAL EQUIPMENT PLAN
FOR
Winding Waters Community Health
Joseph OR

Sheet 3 of 8

Drafted By:
MA #1
1-9-2019
MA #2
1-21-2019
MA #3
2-5-2019

Equipment Specialist: DAN STUCKI Architect/Designer/Contractor: REEDY BERG
Plan # 3

Scale:
1/4"=1'-0"

BURKHART
Integrity. Knowledge. Client Success.

ADAA
MEMBER
American Dental Trade Association

© COPYRIGHT 1992 BURKHART DENTAL SUPPLY COMPANY REVISION #0.1-2004

NOTICE: This proposed plan is offered to assist our customer's architect or designer, AND IT IS NOT TO BE USED AS A WORKING DRAWING. Burkhardt Dental Supply Co. does NOT authorize use of this plan for any other purposes, and we disclaim all liability if used for any other purposes.

Your Local **BURKHART** Branch . .

YAKIMA BRANCH
1705 CREEKSIDE LOOP
YAKIMA, WA 98902
LOCAL: 509-248-5441 ■ FAX: 866-401-6649
WWW.BURKHARTDENTAL.COM

ELECTRICAL LEGEND

ALL ITEMS NOT MARKED WITH A CHECK ARE NOT APPLICABLE TO THIS JOB

- A) All electrical outlets and locations of utility callouts are to be measured to the bottom of a 2x4 or 4x4 electrical box. Electrical outlets not specified are 18" above floor or 6" above countertop. All outlets above countertop should be verified with cabinet elevations for conflict with backsplashes, etc.
- B) If dimensions of electrical and utility locations are not specified, verify and discuss locations with Burkhart and designer and owner / tenant.
- C) If required by code, provide a separate disconnect switch for each x-ray location, verify.
- D) Burkhart equipment installers are not licensed contractors. Consequently, the final "hard" electrical and plumbing connections must be made by the applicable contractors at the time of equipment installation.
- E) Recommended lighting information:
- a) Strip type fluorescent task lighting mounted under upper wall-hung cabinetry. Verify locations with doctor.
 - b) See plans by others for general and decorative lighting and wall switching.
 - c) If required by local code or requested by building owner / tenant, provide battery backup emergency lights in each operatory. Emergency lighting in other areas of the suite to be provided per code.
 - d) Provide minimum 150-200 foot-candles illumination at countertop height (30-32") in all operatories. Suggested lighting should meet the following criteria:
Color Rendering Index (CRI): 90 or above
Color Preference Index (CPI): 90 or above
Spectral Energy Distribution (SED): Natural Daylight
Color Temperature in Degrees Kelvin (K): 5000 K
- F) The contractor shall verify location and access to existing building utilities, including water, gas, air, vacuum, vents, electrical and waste lines when designated on plans. Notify and obtain approval of building manager, if applicable, before discontinuing service prior to hook-up.
- G) Notify Burkhart if ceiling height in the operatories is less than 7'-8" (92"). Ceiling height may effect equipment installation.
- H) All equipment, including low voltage items, which requires hard wiring to be connected by contractor. Burkhart recommends surge suppression for all dedicated circuits.
- I) Some of the dental equipment provided by Burkhart requires mud rings, rough-in boxes, and cover plates. Contractor provide and install as required per manufacturer's instructions.
- J) Data processing equipment, terminal locations and wiring by others.
- K) GFCI breakers may be required at the panel for all circuits serving the patient treatment areas, verify with your local code officials.

RECOMMEND ENTIRE OFFICE SURGE PROTECTION

- 110 volt dedicated outlet. FOR TABLETOP ULTRASONIC CLEANER TO BE LOCATED. See plans by others for any additional outlets that may be required in non-treatment areas.
- 110 volt dedicated outlet. This product draws 6 amps.
 - 220 volt dedicated outlet. This product draws 15 amps.

Sterilizer location TO BE LOCATED.

- Provide ethernet data drop
- 110 volt dedicated circuit. This product draws 12 EACH amps.
- 220 volt dedicated circuit. This product draws 15 amps.
- Provide drain.
- Provide cold water.
- Provide hot water.
- See manufacturer's templates provided by Burkhart.

- Dental operating light location. Provide 110 volt electrical per manufacturer's specifications. This product draws 2 amps. Confer with Burkhart for ceiling height requirements. Provide wood backing per mfg's specifications. See bracing / backing for more information.
- Provide low voltage wiring from light location to chair.
 - See manufacturer's templates provided by Burkhart.

X-ray remote switch location.

- Provide the required number of stranded color coded wires from OR locations as noted on plan and per manufacturer's specifications.
- Provide CAT 5 E cable to this location also.
- Install mfg provided cables from Burkhart.
- See manufacturer templates provided by Burkhart for termination information.

Panoramic X-ray machine location.

- Provide (3 wires with ground) single phase wiring per plan and manufacturer's specifications. Confer with Burkhart for ceiling height requirements.
- Requires ethernet data drop
 - 110 volt dedicated circuit. This product draws 15 amps.
 - 220 volt dedicated circuit. This product draws 15 amps.
 - Install mfg provided cable per Burkhart instructions.
 - See manufacturer's templates provided by Burkhart.

Exhaust fan or other. Provide and switch separately at convenient wall location.

- When installed in a mechanical room, exhaust fan should be thermostatically controlled. Must supply adequate air intake to allow airflow through room. Maintain temperatures between 40 and 90 degrees F. Mechanical room equipment produces heat:
- Air Compressor 4400 BTU/hour
Vacuum 3021 - 7660 BTU/hour

FORCED AIR AND HVAC INPUT MUST BE USED IN ADDITION TO AN EXHAUST FAN IF NORMAL AMBIENT TEMPERATURES VARY FROM SPECIFIED OPERATING TEMPERATURE RANGE. See plans by others for additional exhaust fans that may be required.

DO NOT SCALE FROM THESE DRAWINGS. USE CALLED-OUT DIMENSIONS ONLY.

NOTE:

All framing, bracing, door sizes, floor levels, cabinet heights, rest room and lunch room facilities (if any) and other design details should be modified to comply with latest Americans With Disabilities Act (A.D.A.) guidelines and similar State requirements. Architect or Contractor must submit plans to building and other local officials as necessary for compliance with all Federal, State and Local building codes, including A.D.A. guidelines, before commencing work. Notify Burkhart of any changes that would modify any dental treatment rooms and/or any dental cabinet layout.

These plans are not meant to be a design for building-out an operatory but, instead, represent only a sample layout; a similar layout of the equipment in a dentist's facilities will not necessarily be compatible with the A.D.A. or other applicable law or code. The manufacturers and Burkhart are not Architects or Engineers; the manufacturers and Burkhart do not warrant or represent that the plans are in compliance with the A.D.A. or other applicable law or code. The dentist should consult their Architects prior to installing the equipment to ensure compliance with the A.D.A. or other applicable law or code.

The Contractor should furnish all electrical, plumbing, and structural requirements listed, as this is necessary before the dental equipment can be installed. The tenant, or Burkhart, will furnish the dental equipment. Check all measurements with the actual building dimensions, or Architect's plans. The specifications shown on this plan have not been checked for compliance with Federal, State or Local building codes and regulations.

Listed requirements show only the services, connections and fixtures required for the dental office equipment shown; and these drawings do not provide for the electrical, mechanical and structural requirements for the building or office as a whole.

See Mechanical Specification and Detail Sheets for further information.

THIS IS A SUGGESTED PLAN WITH SPECIFICATIONS FOR THE DENTAL EQUIPMENT ONLY.

- Nitrous oxide and oxygen manifold location. Provide copper piping per codes and install continuously to room and / or locations. Manifold supplied by Burkhart. Contractor install per mfg. specs. All aspects of installation to comply with all local and federal codes. Must be Medical Gas Certified plumber.
- Note: Typical storage closet will contain:
- "G" tanks of N₂O at 489 CF (Cubic Feet) each and
 - "G" tanks of O₂ at 244 CF each.

- Provide 110V separate circuit. This product draws 2 amps.
- See manufacturer's templates provided by Burkhart.

- Nitrous oxide / oxygen alarm monitoring station location. All aspects to comply with all local and federal codes.

- Provide 1/2" electrical conduit with pull string from AND location per manufacturer's specifications.
- Install mfg. provided cable from AND location per mfg. specifications.
- See manufacturer's templates provided by Burkhart.

- Zone valve for nitrous oxide and oxygen with wiring per manufacturer's specifications. Valve provided by Burkhart installed by contractor. Must be Medical Gas Certified plumber. All aspects to comply with NFPA 99C Level 3 standards.
- See manufacturer's templates provided by Burkhart.

Dental unit utility center location.

- Provide 110 volt hardwire connection. This product draws 110 amps.
- Provide 110 volt quad outlet. This product draws 12 amps.
- Provide compressed air for instrumentation devices with shut-off valves, (3/8" angle stop valves or 3-piece ball valves as required by local codes.)
- Provide vacuum.
- Provide 2" conduit.
- Provide cold water.
- Provide low voltage wires.
- See manufacturer's templates provided by Burkhart.

Dental unit utility center location.

- Provide 110 volt hardwire connection. This product draws 6 amps.
- Provide 110 volt quad outlet. This product draws 110 amps.
- Provide compressed air for instrumentation devices with shut-off valves, (3/8" angle stop valves or 3-piece ball valves as required by local codes.)
- Provide vacuum.
- Provide 2" conduit.
- Provide cold water.
- Provide low voltage wires.
- See manufacturer's templates provided by Burkhart.

Location of control panel for low voltage switching. Control panel supplied by Burkhart.

- Provide wires / cabling to each vacuum pump, compressor, water shut-off valve.
- Provide and install Cat 6 cabling to each.
 - Provide Cat 6 cabling to each.
 - Provide 4 sets 4 #18 wires to each.
 - Provide 1/4" polyflow tubing to compressed air line.
 - Provide 1/4" polyflow tubing to compressed air line.
 - Provide 1/4" polyflow tubing to vacuum line.
 - See manufacturer's templates provided by Burkhart.

Dental compressed air for instrumentation devices location.

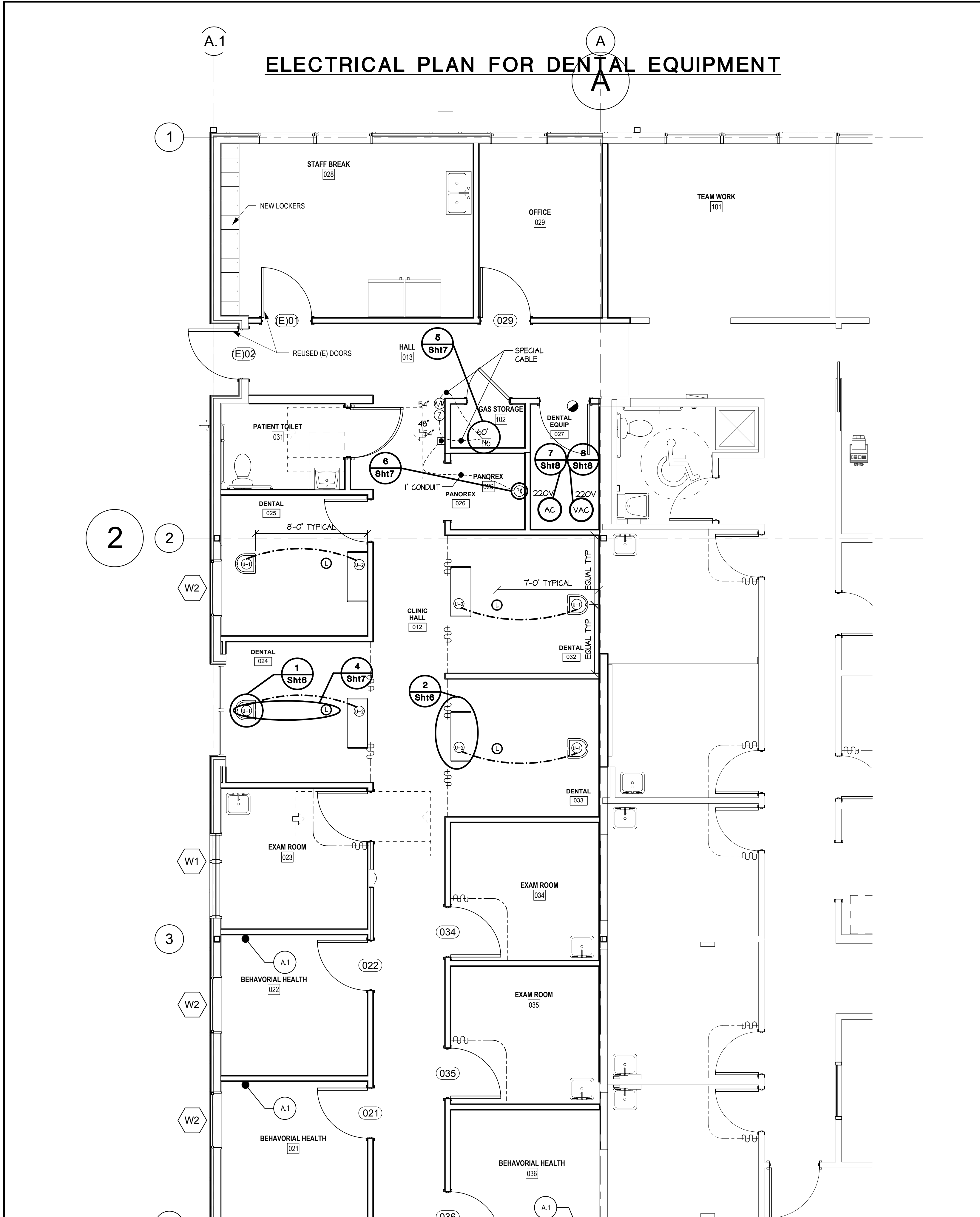
- Provide (3 wire w/ground), single phase wiring per manufacturer's specifications. Provide 1/2" minimum I.D. copper air lines to termination locations as noted on plan. Provide 3/8" angle stop valves or 3-piece ball valves as required by local codes. Install wires to control panel location per mfg specifications. See symbol. Notify Burkhart of voltage variance in building electrical supply. See Burkhart for details. Provide 2" intake to fresh air.
- Provide 110 volt dedicated circuit. This product draws 110 amps.
 - 220 volt 30 amp dedicated circuit. This product draws 16 amps.
 - Hardwire connection with disconnect.
 - Provide receptacle. Verify finish configuration with Burkhart Dental.
 - Provide ethernet data drop
 - See manufacturer's templates provided by Burkhart.

Central dental vacuum motor pump location.

- Provide (3 wire w/ground), single phase wiring per manufacturer's specifications. Provide waste drain to sewer. Provide under floor piping continuous to locations shown and size per plan and mfg. specs. Install wires to control panel location per mfg. specs. See symbol. Provide 2" or 3" exhaust to outside of building for exhaust of pump per mfg. specs., per NFPA. Notify Burkhart of voltage variance in building electrical supply.
- Provide (quantity) cold water hook-up(s).
 - Provide cold water location, 3/4" hose bib.
 - Provide 110 volt dedicated circuit(s). This product draws 110 amps.
 - Provide 220 volt 20 amp dedicated circuit(s). This product draws 15 amps.
 - Hardwire connection with disconnect.
 - Provide receptacle. Verify finish configuration with Burkhart Dental.
 - Provide 120V dedicated outlet at 24" a.f.f. and within 4' of unit.
 - This product draws 5 amps.
 - Provide ethernet data drop
 - Sewer drain to be wall drain, floor sink, as dictated by building design and / or local codes.
 - Exhaust piping to tolerate 180 degrees Fahrenheit.
 - See manufacturer's templates provided by Burkhart.

AVERAGE EQUIPMENT LOADS (in Amps)

| | | | | | |
|----------------------|------|--------------------|-----|----------------|-----|
| Amalgamator | 1.0 | Model Trimmer | 5.0 | X-ray View box | 1.0 |
| Chairs | 10.0 | Ultrasonic Cleaner | 3.0 | Dental Lights | 2.0 |
| Communication system | 2.0 | Ultrasonic Scaler | 1.0 | | |
| Laths | 3.0 | | | | |



Your Local **BURKHART** Branch . . .
YAKIMA BRANCH
1705 CREEKSIDE LOOP
YAKIMA, WA 98902
LOCAL: 509-248-5441 ■ FAX: 866-401-6649
www.burkhardtental.com

BURKHART
Integrity. Knowledge. Client Success.

ADO MEMBER
American Dental Trade Association

ADO
Copyright 1992 BURKHART DENTAL SUPPLY COMPANY. REVISION #10.1-2014

DENTAL EQUIPMENT PLAN FOR Winding Waters Community Health Joseph OR

Sheet 4 of 8

Drafted By: MA #1 1-9-2019 MA #2 1-21-2019 MA #3 2-5-2019

Equipment Specialist: DAN STUCKI Architect/Designer/Contractor: Reedy Berg

Plan # 3

Scale: 1/4"=1'-0"

NOTICE: This proposed plan is offered to assist our customer's architect or designer, AND IT IS NOT TO BE USED AS A WORKING DRAWING. Burkhart Dental Supply Co. does NOT authorize use of this plan for any other purposes, and we disclaim all liability if used for any other purposes.

PLUMBING LEGEND

ALL ITEMS NOT MARKED WITH A CHECK ARE NOT APPLICABLE TO THIS JOB

- A) If dimensions of electrical and utility locations are not specified verify and discuss with Burkhart and designer and owner / tenant.
- B) Burkhart equipment installers are not licensed contractors thus some of the final "hard" dental equipment connections must be made by the applicable contractors at the time of equipment installation.
- C) The contractor shall verify location and access to existing building utilities, including water, gas, air, vacuum, vents, electrical and waste lines when designated on plans. Notify and obtain approval of building manager, if applicable, before discontinuing service prior to hook-up.
- D) All vacuums to be hooked up by contractor as well as sinks, mixing valves, nitrous controls and outlets, developing tanks, etc.
- E) Many areas require back flow prevention--consult local codes and install as necessary.

THIS FACILITY IS A CATEGORY 3 GAS AND VACUUM SYSTEMS CLINIC AS DESCRIBED IN NFPA 99 2012 GUIDELINES, CHAPTER 5: GAS AND VACUUM SYSTEMS.

Compressed air for instrumentation devices valve location. Contractor furnish and install 3/8" compression angle stop or 3-piece ball valve as required by local codes.

Nitrous oxide, oxygen and dental vacuum outlet location. Provide copper piping per codes. Outlets supplied by Burkhart, contractor install per codes. Must be Medical Gas Certified Plumber. All aspects of installation to comply with all local and federal codes

See manufacturer's templates provided by Burkhart.

Zone valve for nitrous oxide and oxygen with wiring per manufacturer's specifications. Valve provided by Burkhart installed by contractor. Must be Medical Gas Certified plumber. All aspects to comply with NFPA 99C Level 3 standards.

See manufacturer's templates provided by Burkhart.

Dental vacuum outlet location. Outlet supplied by Burkhart, contractor install per manufacturer's specs.

Mercury separation and collection. Unit needs to be placed on the floor and inserted into the vacuum line immediately before the vacuum unit. Standard unit size is 23.5"Hx20"Wx8"D unless noted otherwise.

Nitrous oxide and oxygen manifold location. Provide copper piping per codes and install continuously to and / or locations. Manifold supplied by Burkhart. Contractor install per mfg. specs. All aspects of installation to comply with all local and federal codes. Must be Medical Gas Certified plumber.

Note: Typical storage closet will contain:

- (2) - "G" tanks of N₂O at 489 CF each and
(2) - "G" tanks of O₂ at 244 CF each.

Provide 110V separate circuit. This product draws ____ amps.

See manufacturer's templates provided by Burkhart.

Zone valve for nitrous oxide and oxygen with wiring per manufacturer's specifications. Valve provided by Burkhart installed by contractor. Must be Medical Gas Certified plumber. All aspects to comply with NFPA 99C Level 3 standards.

See manufacturer's templates provided by Burkhart.

Dental unit utility center location.

Provide 110 volt hardwire connection. This product draws ____ amps.

Provide 110 volt quad outlet. This product draws ____ amps.

Provide compressed air for instrumentation devices with shut-off valves, (3/8" angle stop valves or 3-piece ball valves as required by local codes.)
Provide vacuum.

Provide 2" conduit.

Provide cold water.

Provide low voltage wires.

See manufacturer's templates provided by Burkhart.

Dental unit utility center location.

Provide 110 volt hardwire connection. This product draws ____ amps.

Provide 110 volt quad outlet. This product draws ____ amps.

Provide compressed air for instrumentation devices with shut-off valves, (3/8" angle stop valves or 3-piece ball valves as required by local codes.)
Provide vacuum.

Provide 2" conduit.

Provide cold water.

Provide low voltage wires.

See manufacturer's templates provided by Burkhart.

Dental compressed air for instrumentation devices location.

Provide (3 wire w/ground), single phase wiring per manufacturer's specifications. Provide 1/2" minimum I.D. copper air lines to termination locations as noted on plan. Provide 3/8" angle stop valves or 3-piece ball valves as required by local codes. Install wires to control panel location per mfg specifications. See symbol. Notify Burkhart of voltage variance in building electrical supply. See Burkhart for details. Provide 2" intake to fresh air.

Provide 110 volt dedicated circuit. This product draws ____ amps.

Provide 220 volt 30 amp dedicated circuit. This product draws ____ amps.

Hardwire connection with disconnect.

Provide receptacle. Verify finish configuration with Burkhart Dental.

Provide ethernet data drop

See manufacturer's templates provided by Burkhart.

Central dental vacuum motor pump location.

Provide (3 wire w/ground), single phase wiring per manufacturer's specifications. Provide waste drain to sewer. Provide under floor piping continuous to locations shown and size per plan and mfg. specs. Install wires to control panel location per mfg. specs. See symbol.
Provide ____ 2" or ____ 3" exhaust to outside of building for exhaust of pump per mfg. specs., per NFPA. Notify Burkhart of voltage variance in building electrical supply.

Provide ____ (quantity) cold water hook-up(s).

Provide cold water location, 3/4" hose bib.

Provide ____ 110 volt dedicated circuit(s). This product draws ____ amps.

Provide ____ 220 volt 20 amp dedicated circuit(s). This product draws ____ 15 ____ amps.

Hardwire connection with disconnect.

Provide receptacle. Verify finish configuration with Burkhart Dental.

Provide 120V dedicated outlet at 24" a.f.f. and within 4' of unit.

This product draws 5 amps.

Provide ethernet data drop

Sewer drain to be ____ wall drain, ____ floor sink, ____ as dictated by building design and / or local codes.

Exhaust piping to tolerate 180 degrees Fahrenheit.

See manufacturer's templates provided by Burkhart.

SUGGESTED PIPING LAYOUT, SEE MFG SPECIFICATIONS, TYPICAL.

AIR LINES

Run 1/2" I.D. copper air line. Terminate all locations with 3/8" compression angle stop shut off valves or 3-piece ball valves as required by local codes.

Terminate 1" above finished floor unless otherwise specified.

Provide 24 hour leak test at 100 PSI with gasses clean air.

Where indicated rough-in, cap lines for future use.

Dental vacuum lines. Use only schedule 40 PVC pipe (or copper) if required by local code. Slope 1/4" for every 10 feet of run toward pump location. Avoid 90 degree angles when possible. See termination schedule.

Final hook up by plumber. Vacuum lines to run sub grade and to follow trench layout.

Indicates termination point.

PLUMBING TERMINATIONS FOR EQUIPMENT REQUIRED BY SERVICE DEPARTMENT FOR DRY VACUUM SYSTEMS

THIS FACILITY IS A CATEGORY 3 GAS AND VACUUM SYSTEMS CLINIC AS DESCRIBED IN NFPA 99 2012 GUIDELINES, CHAPTER 5: GAS AND VACUUM SYSTEMS.

Vacuum Systems:

Operatory - 1-1/2" stub up in each operatory terminating in 3/4" female pipe thread

Pump - 1-1/2" - 2" (VERIFY) female pipe thread

Water - 3/8" compression fitting (angle stop)

Compressed air for Instrumentation Devices Systems:

At compressor - 1/2" female pipe thread

In operatory - 3/8" compression angle stop or 3-piece ball valves as required by local codes

PLUMBING INSTALLATION INSTRUCTIONS FOR CENTRAL OXYGEN AND NITROUS OXIDE PIPING SYSTEMS. ALL ASPECTS OF INSTALLATION AND STORAGE TO COMPLY WITH CURRENT CODES.

THIS FACILITY IS A CATEGORY 3 GAS AND VACUUM SYSTEMS CLINIC AS DESCRIBED IN NFPA 99 2012 GUIDELINES, CHAPTER 5: GAS AND VACUUM SYSTEMS.

1. Plumber furnish and install the copper tubing.

A. Use type "K" or "L", Pre-cleaned, degassed, capped copper tubing.

B. Use 1/2" O.D. tubing for oxygen lines.

C. Use 3/8" O.D. tubing for nitrous oxide lines.

D. Braze all joints.

Fahrenheit. Do not use corrosive flux.

E. Mark pipelines every 20 feet. Blue for nitrous oxide. Green for oxygen.

F. Install quick connect boxes and tank room manifold supplied by dental dealer.

2. Test system for leaks.

A. Use water pumped dry nitrogen.

B. Fill system to 150 psi.

C. Disconnect nitrogen tank.

D. System should hold pressure for 24 hours. Allow + or - 5 psi for temperature differences.

3. All piping must comply with local plumbing and fire regulations. Must be Medical Gas Certified Plumber.

4. All aspects of installation must comply with current codes.

NITROUS, GAS AND OXYGEN TANK STORAGE ROOM CONSTRUCTION AND VENTILATION FOR LEVEL 3 INSTALLATIONS ONLY.

Provide 1-hour construction of closet. Natural ventilation is permitted if gas stored is under 3000 cubic feet.

Provide two louvered openings, each having a minimum free area of 72 square inches, with one located within 1 foot of the floor and one located within 1 ft of the ceiling. Louvered natural ventilation shall only be allow directly to the outside. Provide mechanical ventilation to all indoor locations.

DO NOT SCALE FROM THESE DRAWINGS. USE CALLED-OUT DIMENSIONS ONLY.

NOTE:

All framing, bracing, door sizes, floor levels, cabinet heights, rest room and lunch room facilities (if any) and other design details should be modified to comply with latest Americans With Disabilities Act (A.D.A.) guidelines and similar State requirements. Architect or Contractor must submit plans to building and other local officials as necessary for compliance with all Federal, State and Local building codes, including A.D.A. guidelines, before commencing work. Notify Burkhart of any changes that would modify any dental treatment rooms and/or any dental cabinet layout.

These plans are not meant to be a design for building-out an operatory but, instead, represent only a sample layout; a similar layout of the equipment in a dental's facilities will not necessarily be compatible with the A.D.A. or other applicable law or code. The manufacturers and Burkhart are not Architects or Engineers; the manufacturers and Burkhart do not warrant or represent that the plans are in compliance with the A.D.A. or other applicable law or code. The dentist should consult their Architects prior to installing the equipment to ensure compliance with the A.D.A. or other applicable law or code.

The Contractor should furnish all electrical, plumbing, and structural requirements listed, as this is necessary before the dental equipment can be installed. The tenant, or Burkhart, will furnish the dental equipment. Check all measurements with the actual building dimensions, or Architect's plans. The specifications shown on this plan have not been checked for compliance with Federal, State or Local building codes and regulations.

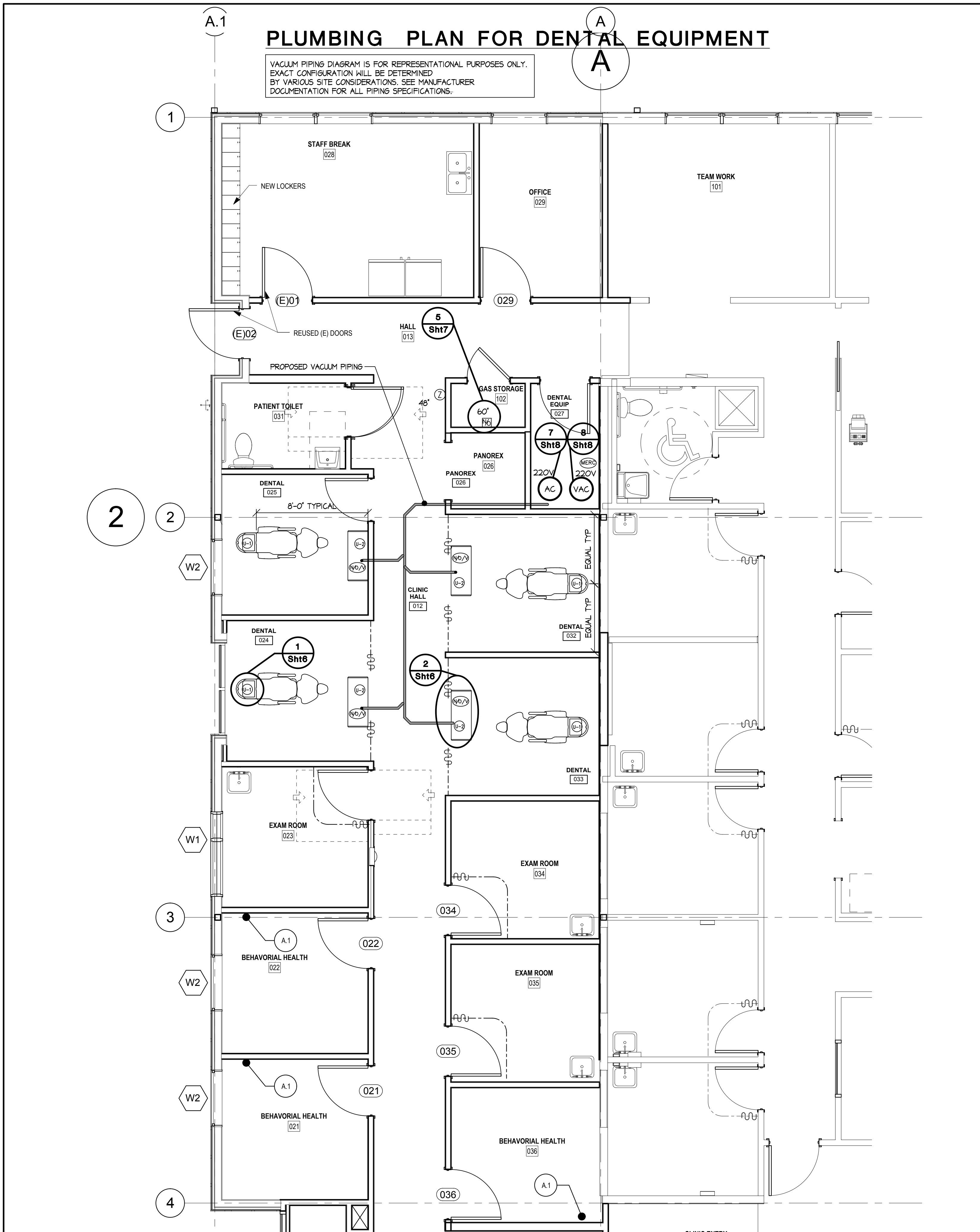
Listed requirements show only the services, connections and fixtures required for the dental office equipment shown; and these drawings do not provide for the electrical, mechanical and structural requirements for the building or office as a whole.

See Mechanical Specification and Detail Sheets for further information.

THIS IS A SUGGESTED PLAN WITH SPECIFICATIONS FOR THE DENTAL EQUIPMENT ONLY.

PLUMBING PLAN FOR DENTAL EQUIPMENT

VACUUM PIPING DIAGRAM IS FOR REPRESENTATIONAL PURPOSES ONLY. EXACT CONFIGURATION WILL BE DETERMINED BY VARIOUS SITE CONSIDERATIONS. SEE MANUFACTURER DOCUMENTATION FOR ALL PIPING SPECIFICATIONS.



DENTAL EQUIPMENT PLAN FOR

Winding Waters Community Health Joseph OR

Sheet 5 of 8

Drafted By:
MA #1
1-9-2019
MA #2
1-21-2019
MA #3
2-5-2019

Equipment Specialist: DAN STUCKI
Plan # 3
Architect/Designer/Contractor

Scale: 1/4"=1'-0"

BURKHART
Integrity. Knowledge. Client Success.

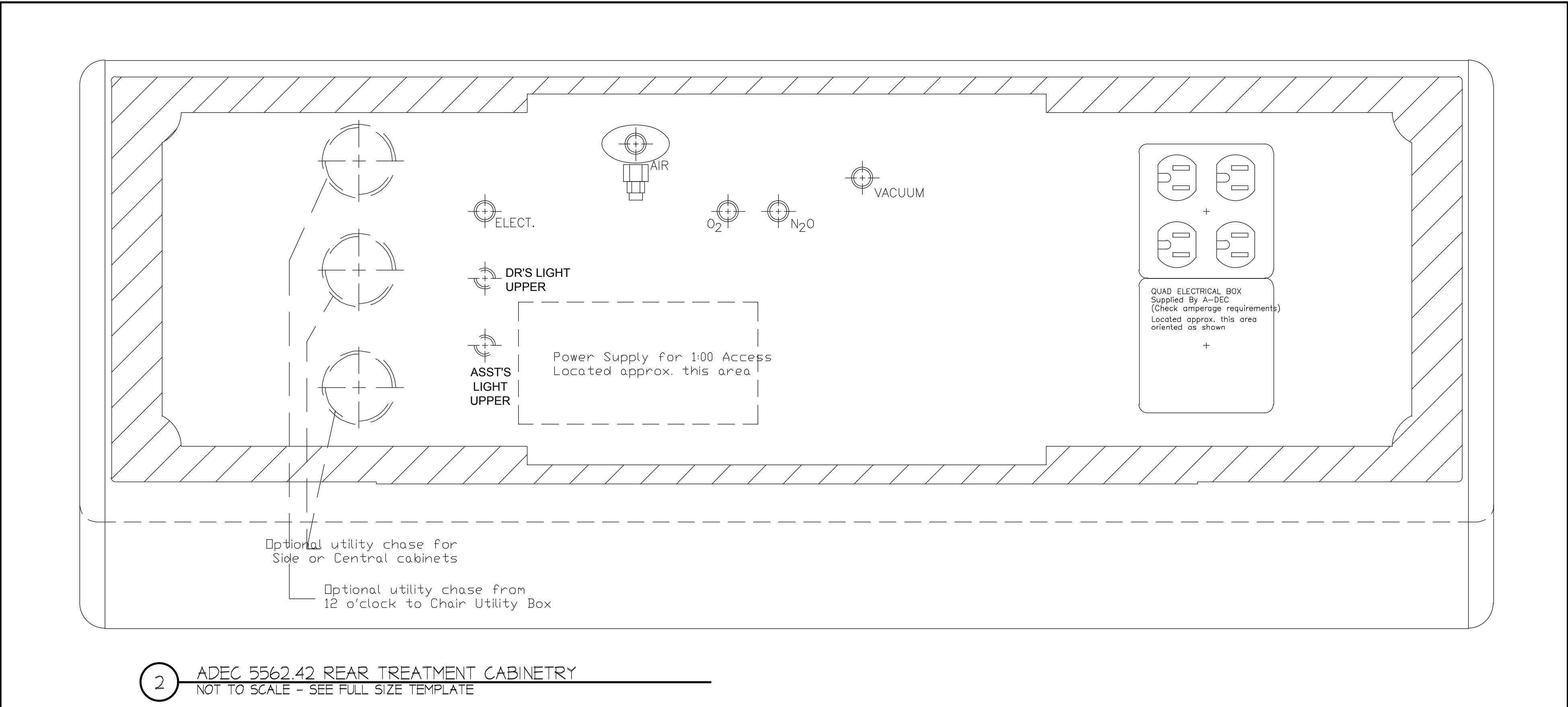
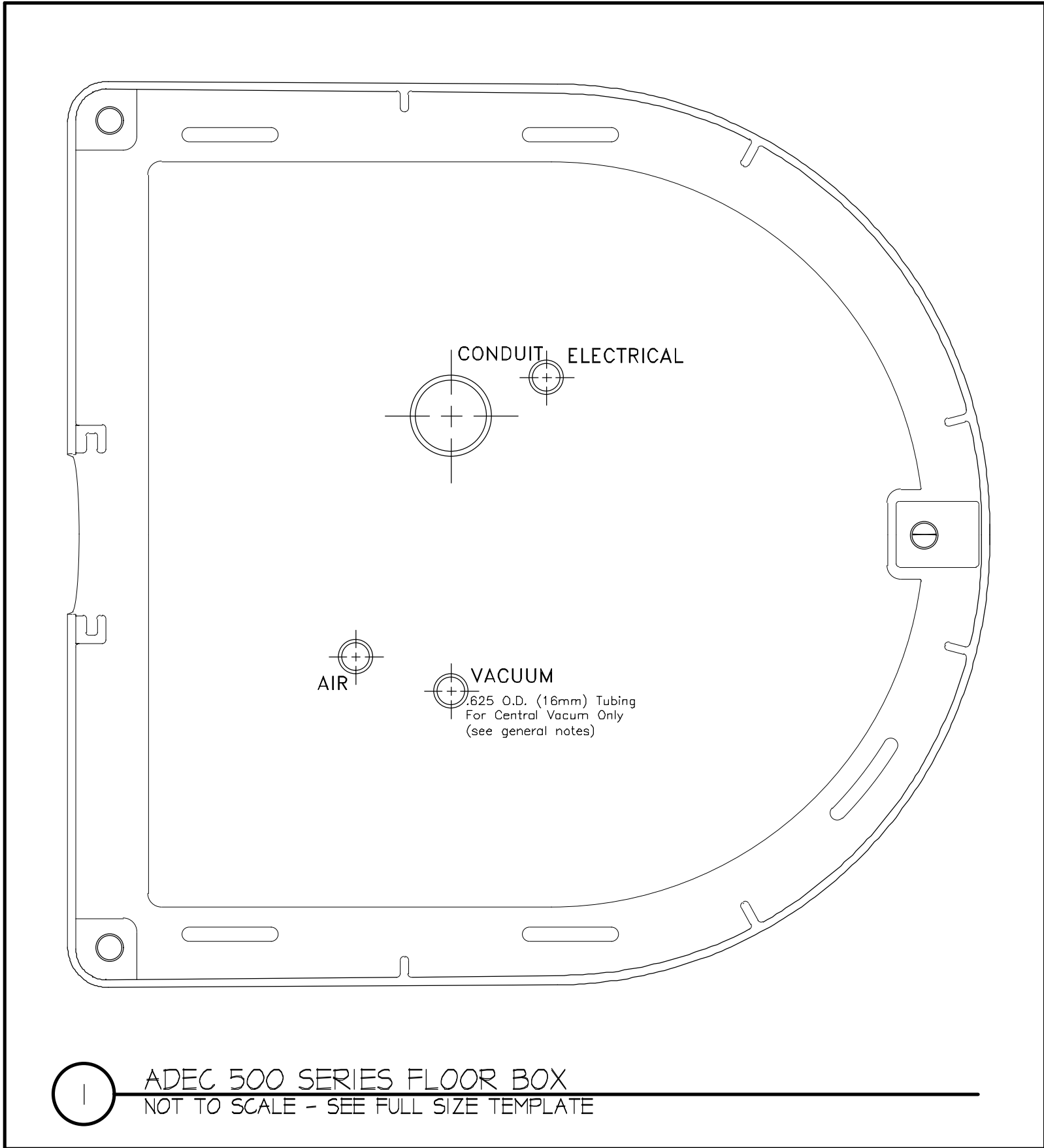
MEMBER
American Dental Association

© COPYRIGHTED 1992 BURKHART DENTAL SUPPLY COMPANY. REVISION #10, 1-2014

NOTICE: This proposed plan is offered to assist our customer's architect or designer, AND IT IS NOT TO BE USED AS A WORKING DRAWING. Burkhart Dental Supply Co. does NOT authorize use of this plan for any other purposes, and we disclaim all liability if used for any other purposes.

Your Local BURKHART Branch

YAKIMA BRANCH
1705 CREEKSIDE LOOP
YAKIMA, WA 98902
LOCAL: 509-248-5441 FAX: 866-401-6649
www.burkhartdental.com



DO NOT SCALE FROM THESE DRAWINGS.
USE CALLED-OUT DIMENSIONS ONLY.

NOTE:
All framing, bracing, door sizes, floor levels, cabinet heights, rest room and lunch room facilities (if any) and other design details should be modified to comply with latest Americans With Disabilities Act (A.D.A.) guidelines and similar State requirements. Architect or Contractor must submit plans to building and other local officials as necessary for compliance with all Federal, State and Local building codes, including A.D.A. guidelines, before commencing work. Notify Burkhart of any changes that would modify any dental treatment rooms and/or any dental cabinet layout.

These plans are not meant to be a design for building-out an operator but, instead, represent only a sample layout; a similar layout of the equipment in a dentist's facilities will not necessarily be compatible with the A.D.A. or other applicable law or code. The manufacturers and Burkhart are not Architects or Engineers; the manufacturers and Burkhart do not warrant or represent that the plans are in compliance with the A.D.A. or other applicable law or code. The dentist should consult their Architects prior to installing the equipment to ensure compliance with the A.D.A. or other applicable law or code.

The Contractor should furnish all electrical, plumbing, and structural requirements listed, as this is necessary before the dental equipment can be installed. The tenant, or Burkhart, will furnish the dental equipment. Check all measurements with the actual building dimensions, or Architect's plans. The specifications shown on this plan have not been checked for compliance with Federal, State or Local building codes and regulations.

Listed requirements show only the services, connections and fixtures required for the dental office equipment shown; and these drawings do not provide for the electrical, mechanical and structural requirements for the building or office as a whole.

See Mechanical Specification and Detail Sheets for further information.

**THIS IS A SUGGESTED PLAN WITH
SPECIFICATIONS FOR THE DENTAL EQUIPMENT ONLY.**

| | |
|---|-------------------------------|
| DENTAL MECHANICAL DETAILS FOR Winding Waters Community Health Joseph, OR | |
| Sheet 6 of 8 | |
| Drafted By: | |
| MA #1 1-9-2019 | |
| MA #3 2-5-2019 | |
| Equipment Specialist: | Architect/Designer/Contractor |
| Plan # 3 | |
| Scale: | NTS |

Your Local **BURKHART** Branch . . .
YAKIMA BRANCH
1705 CREEKSIDE LOOP
YAKIMA, WA 98902
LOCAL: 509-248-5441 ■ FAX: 866-401-6649
www.burkhardt-dental.com

BURKHART
Integrity Knowledge Client Success
ADCA MEMBER
American Dental Trade Association
© COPYRIGHTED 1992 BURKHART DENTAL SUPPLY COMPANY REVISION #10, 1-2004

NOTICE: This proposed plan is offered to assist our customer's architect or designer, AND IT IS NOT TO BE USED AS A WORKING DRAWING. Burkhart Dental Supply Co. does NOT authorize use of this plan for any other purposes, and we disclaim all liability if used for any other purposes.

